

Alamance Consulting Engineers

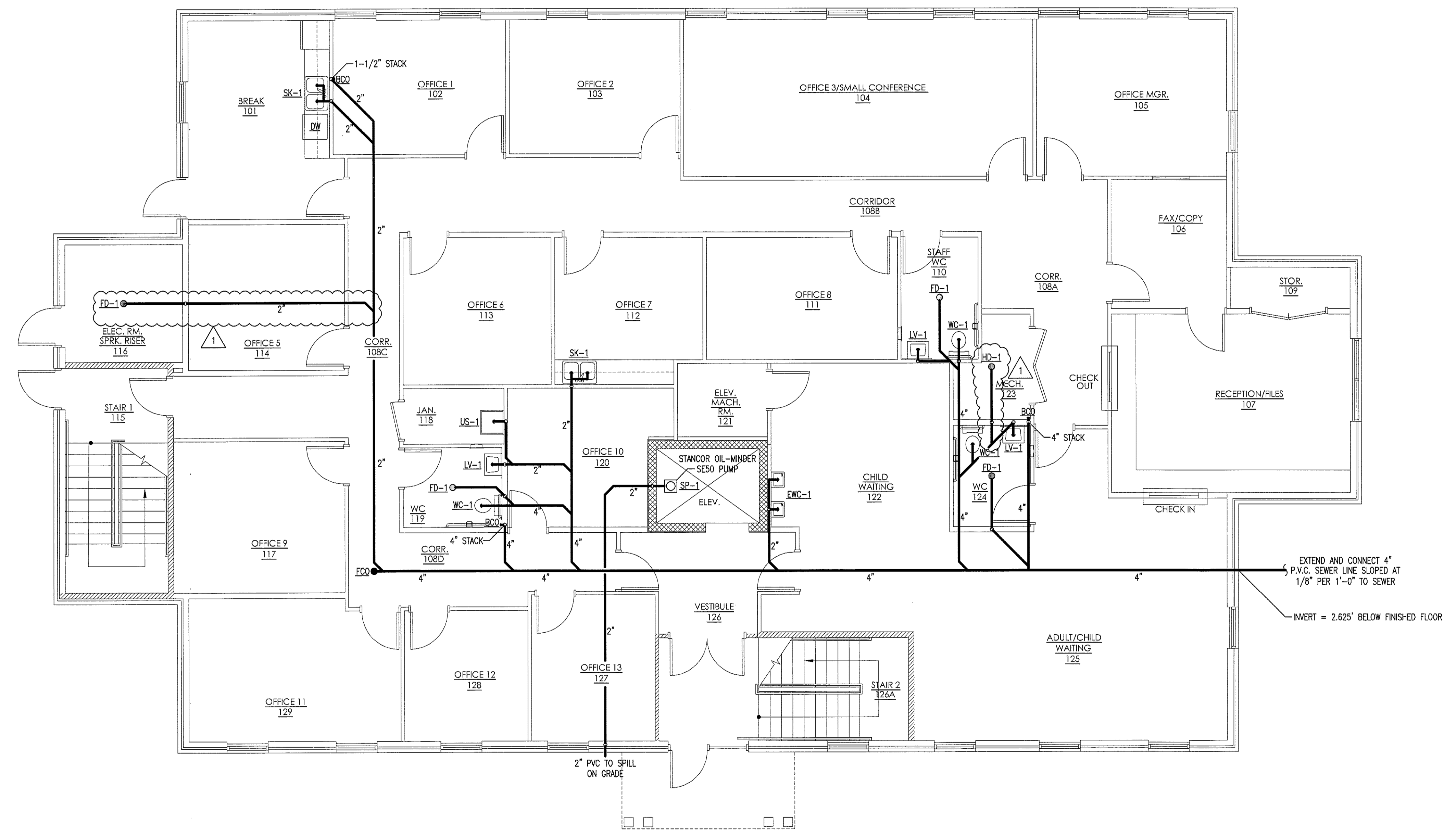
961-F Burlington Ave.
Gibsonville, N.C. 27249
Phone: (336) 449-4558
Fax: (336) 449-5732

HOUSEWRIGHT BUILDING CO.

P.O. BOX 786
CARRBORO, NC 27510
919-524-2074

**NEW BUILDING FACILITY:
CBC OFFICE BUILDING**

Hillsborough, North Carolina



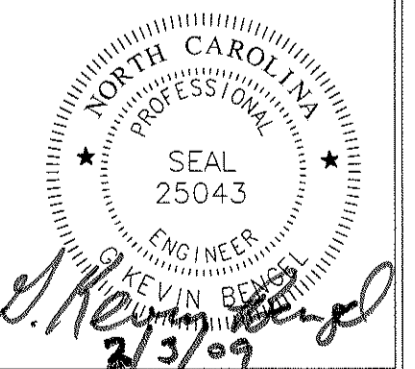
1
P-1
1st FLOOR PLUMBING PLAN
SCALE: 3/16" = 1'-0"

PIPING LEGEND	
SYMBOL	DESCRIPTION
	SEWER PIPING

WALL LEGEND	
	1HR. RATED GYPSUM WALL
	1HR. RATED MASONRY WALL

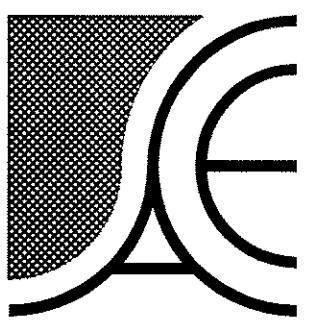
REV #	DATE	BY	CHECKED	DESCRIPTION
1	3/3/09	TGW		REVISED TO SUIT NEW FLOOR PLAN, RELOCATED FLOOR DRAIN, AND ADDED HUB DRAIN AT THE REQUEST OF THE GENERAL CONTRACTOR (A. KNIGHT). REFER TO EMAIL FROM ARCHITECT (D. RIPPERTON) DATED 2-20-09.

DRAWING NAME
1st FLOOR PLUMBING PLAN



DRAWN	TGW
CHECKED	JNK
DATE	1/8/09
SCALE	AS NOTED
JOB NO.	8123
SHEET	

P-1



Alamanco Consulting Engineers

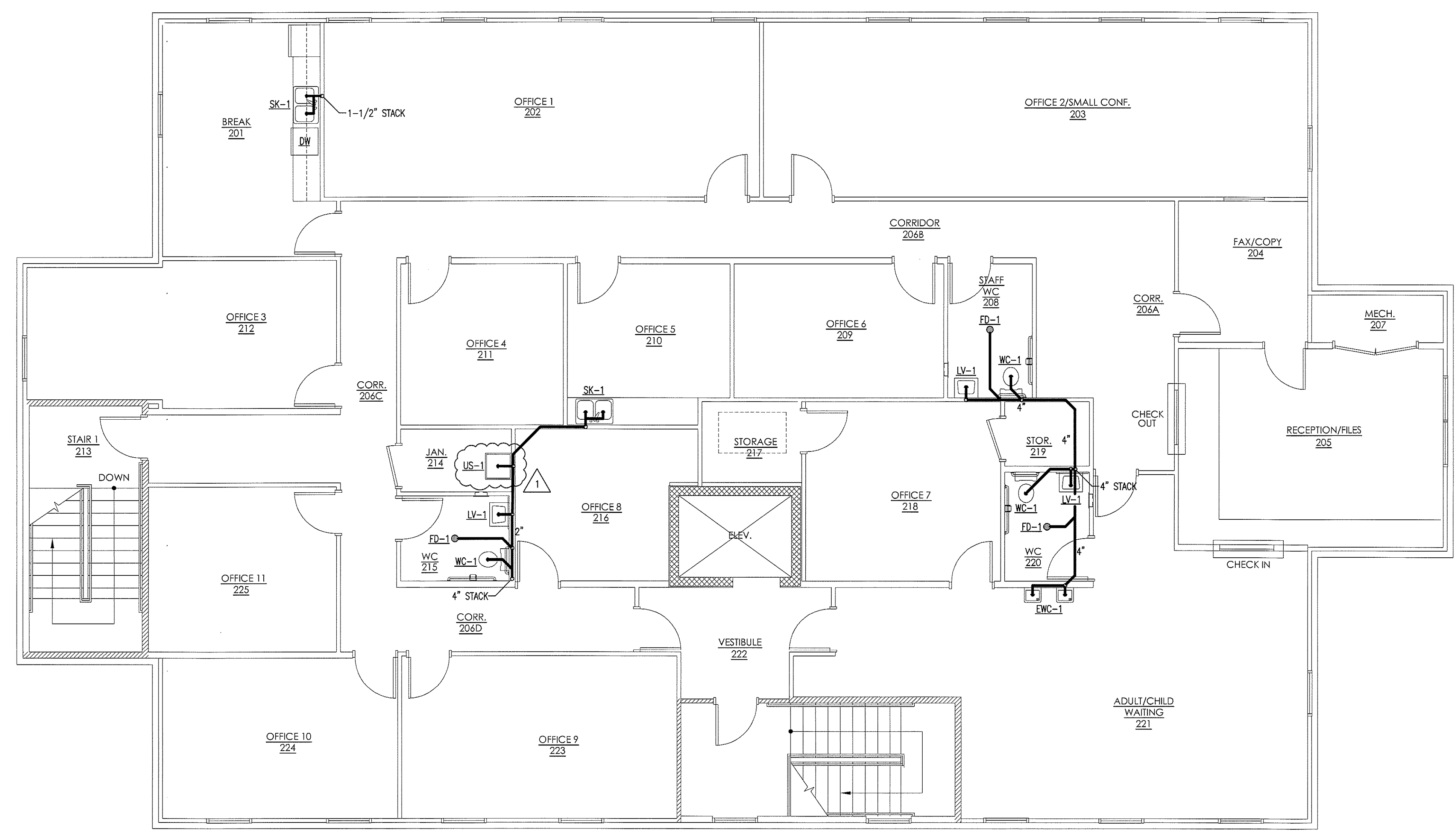
961-F Burlington Ave.
Gibsonville, N.C. 27249
Phone: (336) 449-4558
Fax: (336) 449-5732

HOUSEWRIGHT BUILDING CO.

P.O. BOX 786
CARRBORO, NC 27510
919-524-2074

**NEW BUILDING FACILITY:
CBC OFFICE BUILDING**

Hillsborough, North Carolina



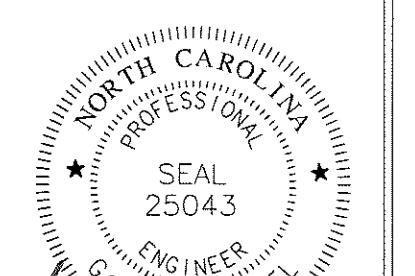
2nd FLOOR
PLUMBING PLAN
SCALE: 3/16" = 1'-0"

PIPING LEGEND	
SYMBOL	DESCRIPTION
—	SEWER PIPING

WALL LEGEND	
SYMBOL	DESCRIPTION
▨	1HR. RATED GYPSUM WALL
▩	1HR. RATED MASONRY WALL

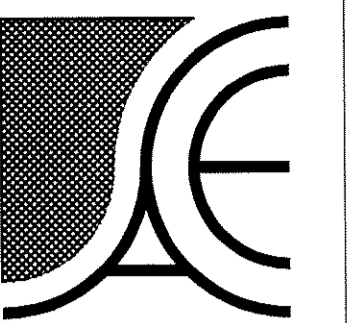
REV #	DATE	BY	CHECKED	DESCRIPTION
1	3/3/09	TGW	JNK	REVISED TO SUIT NEW FLOOR PLAN AND ADDED UTILITY SINK AT THE REQUEST OF THE GENERAL CONTRACTOR (A. KNIGHT). REFER TO EMAIL FROM ARCHITECT (D. RIPPERTON) DATED 2-20-09.

DRAWING NAME:
2nd FLOOR
PLUMBING PLAN



DRAWN:
TGW
CHECKED:
JNK
DATE:
1/8/09
SCALE:
AS NOTED
FORM NO:
8123
SHEET

P-2



Alamance Consulting Engineers

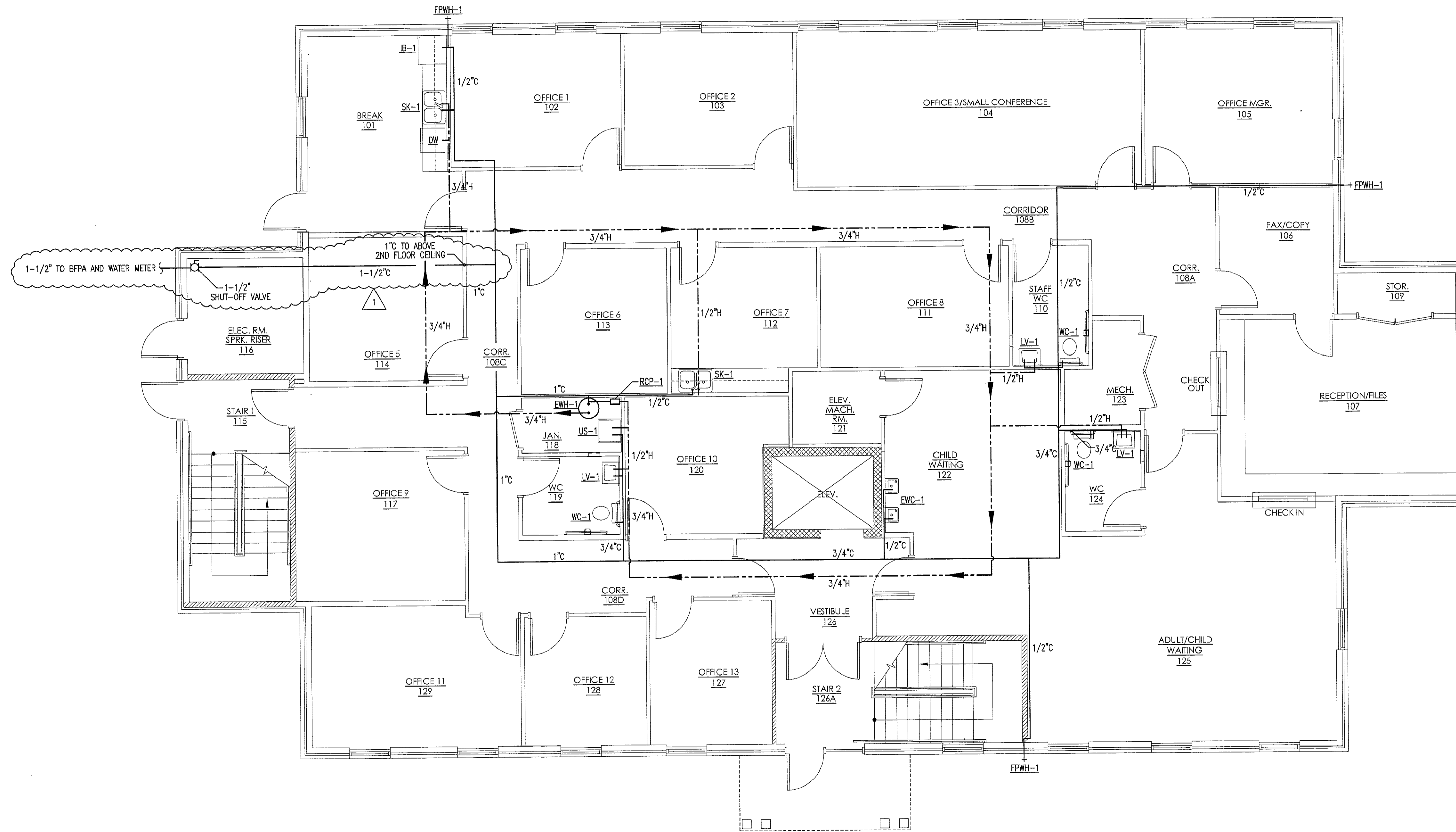
961-F Burlington Ave.
Gibsonville, N.C. 27249
Phone: (336) 449-4558
Fax: (336) 449-5732

HOUSEWRIGHT BUILDING CO.

P.O. BOX 786
CARRBORO, NC 27510
919-524-2074

**NEW BUILDING FACILITY:
CBC OFFICE BUILDING**

Hillsborough, North Carolina



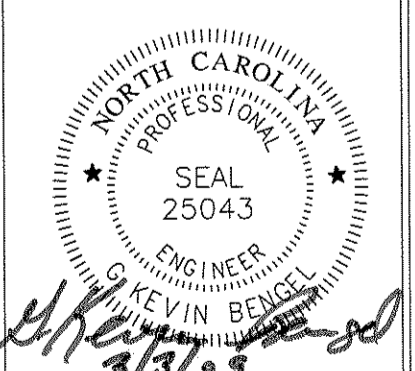
1st FLOOR
WATER PIPING PLAN
SCALE: 3/16" = 1'-0"

PIPING LEGEND	
SYMBOL	DESCRIPTION
H	HOT WATER
C	COLD WATER

WALL LEGEND	
[Symbol]	1HR. RATED GYPSUM WALL
[Symbol]	1HR. RATED MASONRY WALL

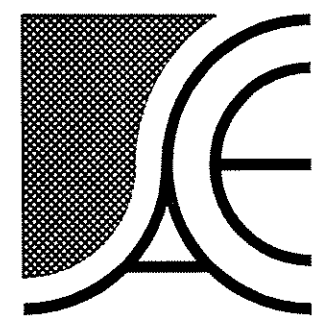
REV #	DATE	BY	CHECKED	DESCRIPTION
1	3/3/09	TGW	JNK	REVISED TO SUIT NEW FLOOR PLAN AND RELOCATED WATER ENTRY LOCATION AT THE REQUEST OF THE GENERAL CONTRACTOR (A. KNIGHT). REFER TO EMAIL FROM ARCHITECT (D. RIPPERTON) DATED 2-20-09.

DRAWING NAME
1st FLOOR
WATER PIPING PLAN



DRAWN
TGW
CHECKED
JNK
DATE
1/8/09
SCALE
AS NOTED
JOB NO.
8123
SHEET

P-3



Alamance Consulting Engineers

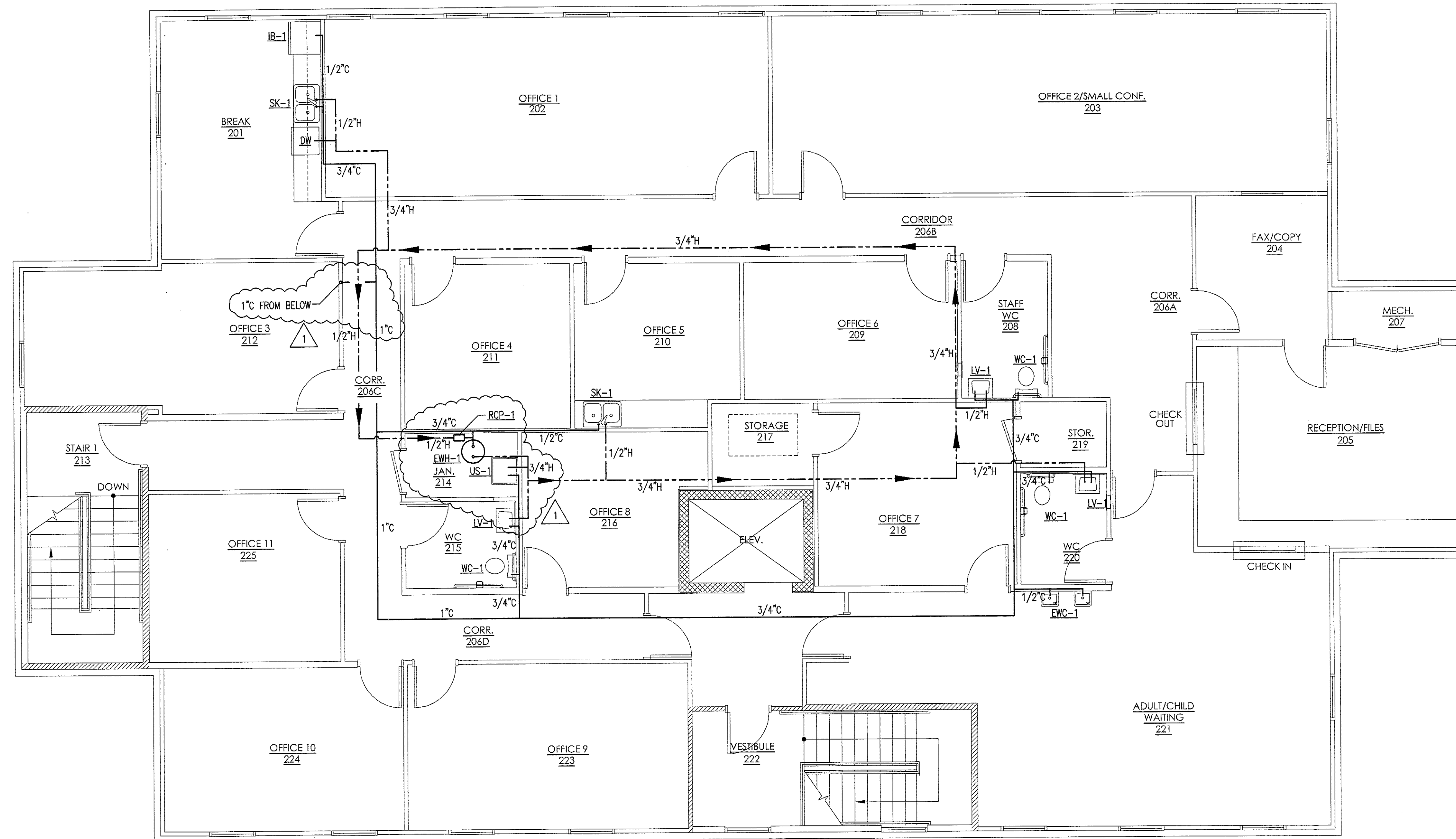
961-F Burlington Ave.
Gibsonville, N.C. 27249
Phone: (336) 449-4558
Fax: (336) 449-5732

HOUSEWRIGHT BUILDING CO.

P.O. BOX 786
CARRBORO, NC 27510
919-524-2074

**NEW BUILDING FACILITY:
CBC OFFICE BUILDING**

Hillsborough, North Carolina



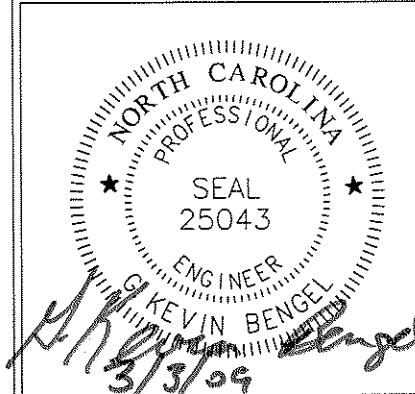
2nd FLOOR
WATER PIPING PLAN
P-4
SCALE: 3/16" = 1'-0"

PIPING LEGEND	
SYMBOL	DESCRIPTION
H	HOT WATER
C	COLD WATER

WALL LEGEND	
[Symbol]	1HR. RATED GYPSUM WALL
[Symbol]	1HR. RATED MASONRY WALL

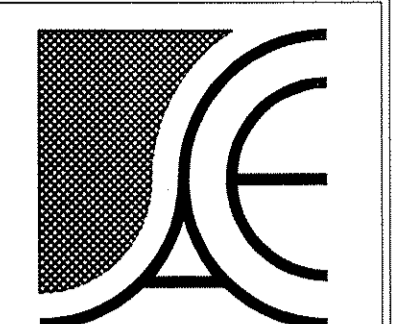
REV #	DATE	BY	CHECKED	DESCRIPTION
1	3/3/09	TGW	[Signature]	REVISED TO SUIT NEW FLOOR PLAN, RELOCATED WATER ENTRY LOCATION, AND ADDED UTILITY SINK AT THE REQUEST OF THE GENERAL CONTRACTOR (A. KNIGHT). REFER TO EMAIL FROM ARCHITECT (D. RIPPERTON) DATED 2-20-09.

DRAWING NAME
2nd FLOOR
WATER PIPING PLAN



DRAWN
TGW
CHECKED
JNK
DATE
1/8/09
SCALE
AS NOTED
JOB NO.
8123
SHEET

P-4



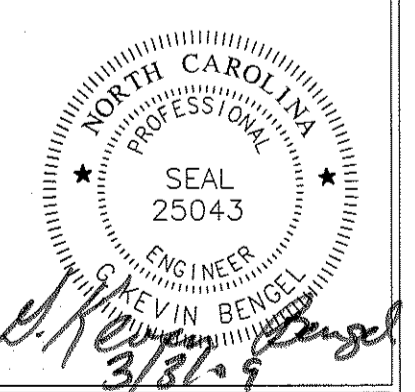
Alamance Consulting Engineers

961-F Burlington Ave.
Gibsonville, N.C. 27249
Phone: (336) 449-4558
Fax: (336) 449-5732

HOUSEWRIGHT BUILDING CO.
P.O. BOX 786
CARRBORO, NC 27510
919-524-2074

**NEW BUILDING FACILITY:
CBC OFFICE BUILDING**
Hillsborough, North Carolina

DRAWING NAME
WATER PIPING RISER DIAGRAM

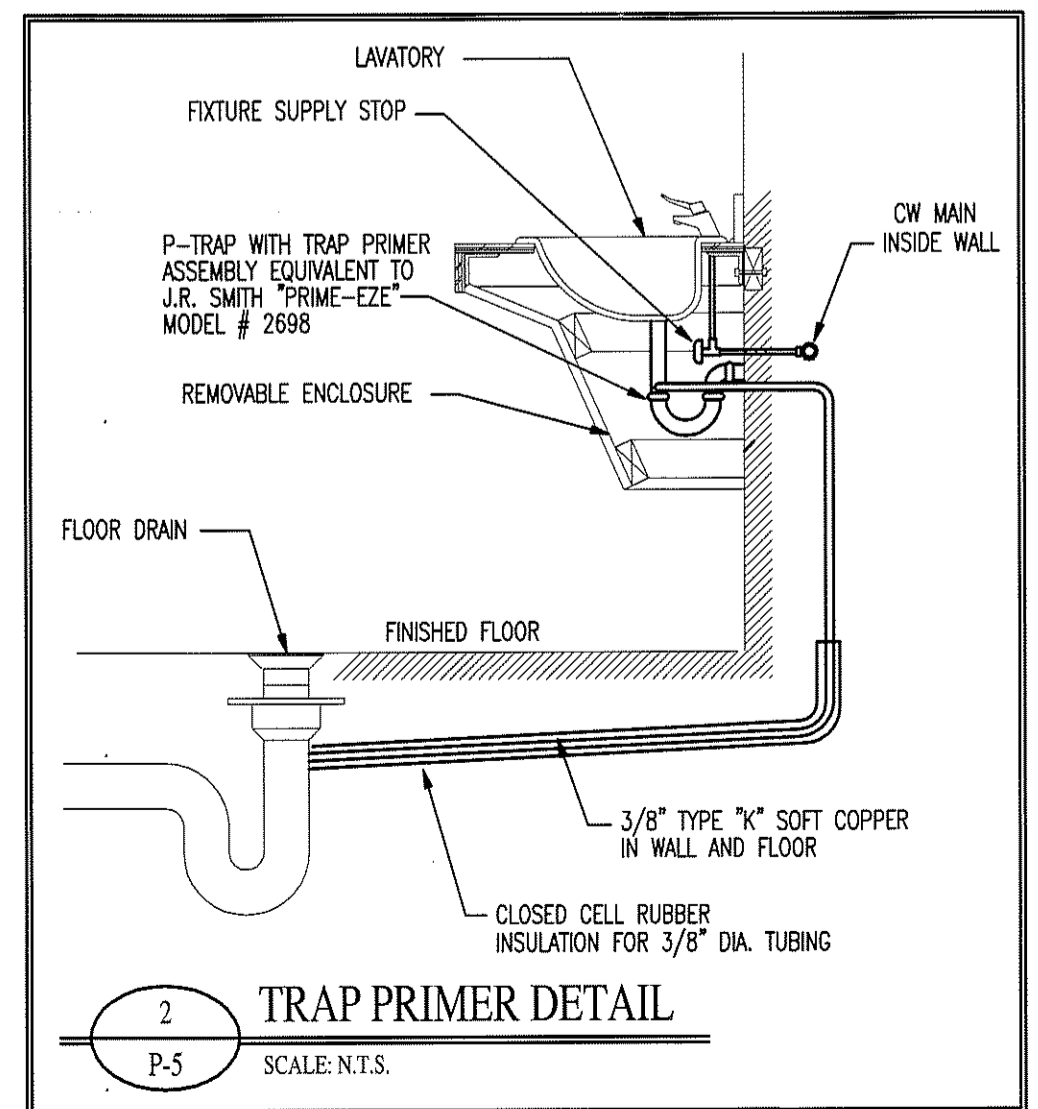
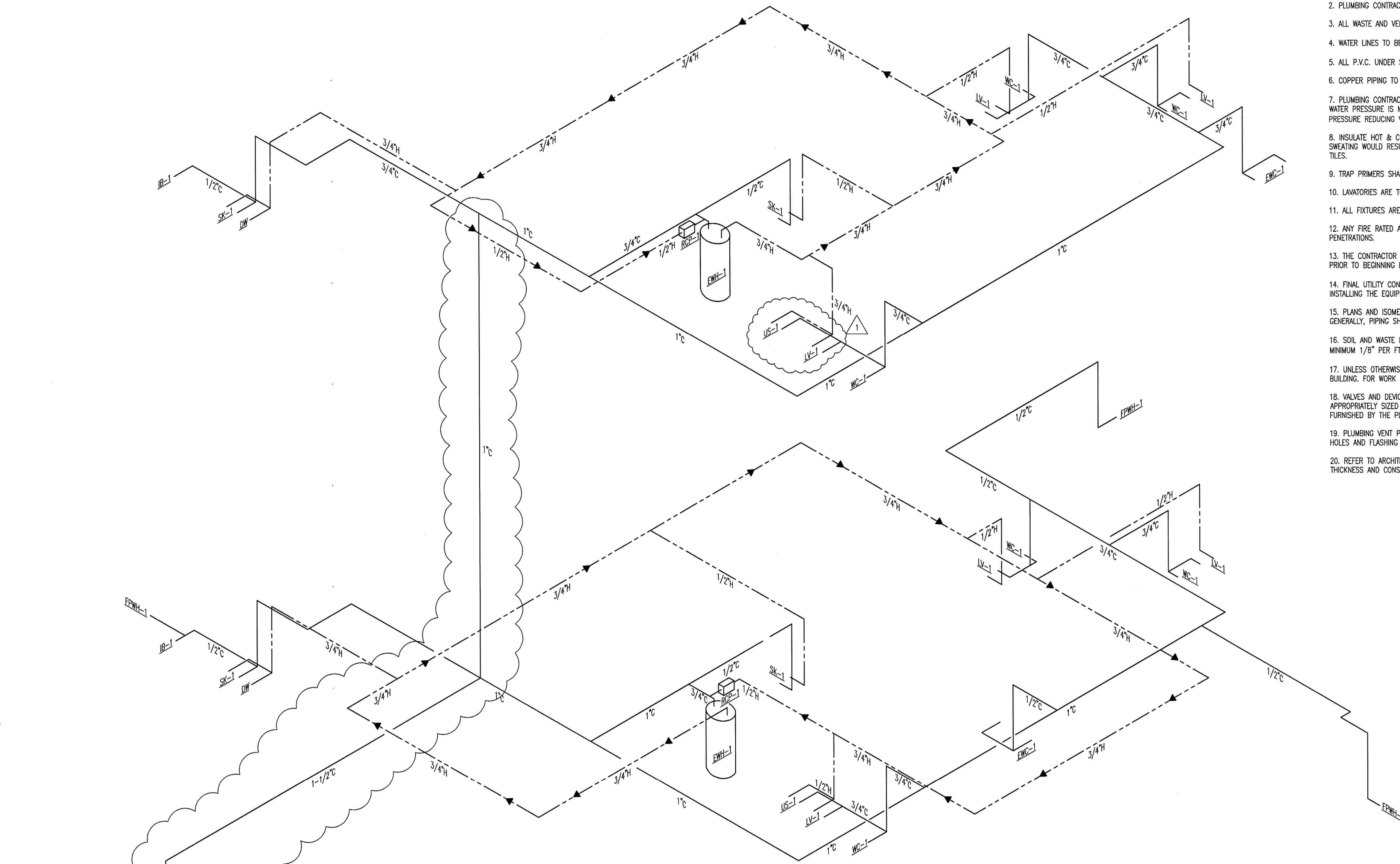


DRAWN: TGW
CHECKED: JNK
DATE: 1/8/09
SCALE: AS NOTED
JOB NO.: 8123
SHEET

P-5

PLUMBING NOTES:

1. PLUMBING TO BE INSTALLED IN ACCORDANCE WITH ALL STATE AND LOCAL CODES.
2. PLUMBING CONTRACTOR TO COORDINATE ALL WORK WITH OTHER TRADES.
3. ALL WASTE AND VENT PIPING TO BE SCHEDULE 40 P.V.C.
4. WATER LINES TO BE COPPER TYPE K (SOFT DRAWN) BELOW SLAB, AND CROSS-LINKED POLYETHYLENE ABOVE SLAB.
5. ALL P.V.C. UNDER SLAB SHALL BE A MINIMUM OF 2" NPS.
6. COPPER PIPING TO BE INSULATED WHERE IT PASSES THROUGH CONCRETE.
7. PLUMBING CONTRACTOR SHALL (OR HAVE LOCAL MUNICIPALITY) PERFORM A WATER PRESSURE TEST. IF RESIDUAL WATER PRESSURE IS MORE THAN 80 PSI OR LESS THAN 35 PSI, CONTACT ENGINEER TO ASSESS NEED FOR A PRESSURE REDUCING VALVE (PRV) OR A PRESSURE BOOSTER SYSTEM.
8. INSULATE HOT & COLD WATER LINES IN ACCORDANCE WITH BUILDING CODE. INSULATE COLD WATER LINES WHERE SWEATING WOULD RESULT IN STRUCTURAL DAMAGE TO BUILDING DUE TO ROTTING OF WOOD OR STAINING OF CEILING TILES.
9. TRAP PRIMERS SHALL BE INSTALLED ON FLOOR DRAINS.
10. LAVATORIES ARE TO BE EQUIPPED WITH CLEAN-OUT TEES BELOW.
11. ALL FIXTURES ARE TO BE EQUIPPED WITH SHUT-OFF VALVES ON SUPPLY LINES.
12. ANY FIRE RATED ASSEMBLY PENETRATIONS ARE TO BE PER CODE. CONTRACTOR SHOULD REVIEW ALL FIRE RATING PENETRATIONS.
13. THE CONTRACTOR SHALL COORDINATE THE LOCATION OF ALL PIPING AND EQUIPMENT WITH ALL OTHER TRADES PRIOR TO BEGINNING INSTALLATION TO AVOID CONFLICTS AND INTERFERENCE WITH OTHER TRADES.
14. FINAL UTILITY CONNECTIONS (GAS, ELECTRIC, WATER ETC.) TO EQUIPMENT SHALL BE MADE BY THE CONTRACTOR INSTALLING THE EQUIPMENT REQUIRING THE UTILITIES.
15. PLANS AND ISOMETRICS ARE DIAGRAMMATIC. THERE IS NO INTENT TO INDICATE ALL AND FITTINGS REQUIRED. GENERALLY, PIPING SHALL BE INSTALLED PARALLEL OR PERPENDICULAR TO AND PLUMB WITH WALL CONSTRUCTION.
16. SOIL AND WASTE PIPING SHALL BE LAID ON MINIMUM 1/4" PER FT. SLOPE FOR PIPE SIZES LESS THAN 3", AND MINIMUM 1/8" PER FT. FOR PIPE 3" AND LARGER UNLESS OTHERWISE NOTED.
17. UNLESS OTHERWISE NOTED, PLUMBING CONTRACT SHALL TERMINATE AT A POINT FIVE (5) FEET OUTSIDE THE BUILDING. FOR WORK BY OTHER CONTRACTORS OUTSIDE THE 5 FOOT TERMINATION, REFER TO SITE UTILITY DRAWINGS.
18. VALVES AND DEVICES INSIDE CHASES OR WALLS OR ABOVE NON-ACCESSIBLE CEILINGS SHALL BE PROVIDED WITH APPROPRIATELY SIZED ACCESS PANEL COMPATIBLE WITH SURROUNDING FINISHES. SUCH ACCESS PANELS SHALL BE FURNISHED BY THE PLUMBING CONTRACTOR FOR INSTALLATION BY THE GENERAL CONTRACTOR.
19. PLUMBING VENT PIPING PENETRATING ROOF SHALL BE INSTALLED BY THE PLUMBING CONTRACTOR. CUTTING OF HOLES AND FLASHING OF PENETRATIONS SHALL BE BY THE GENERAL CONTRACTOR.
20. REFER TO ARCHITECTURAL DRAWINGS FOR DIMENSIONED LOCATIONS OF WALLS AND PARTITIONS AND FOR PARTITION THICKNESS AND CONSTRUCTION MATERIALS.



WATER PIPING RISER DIAGRAM
SCALE: N.T.S.

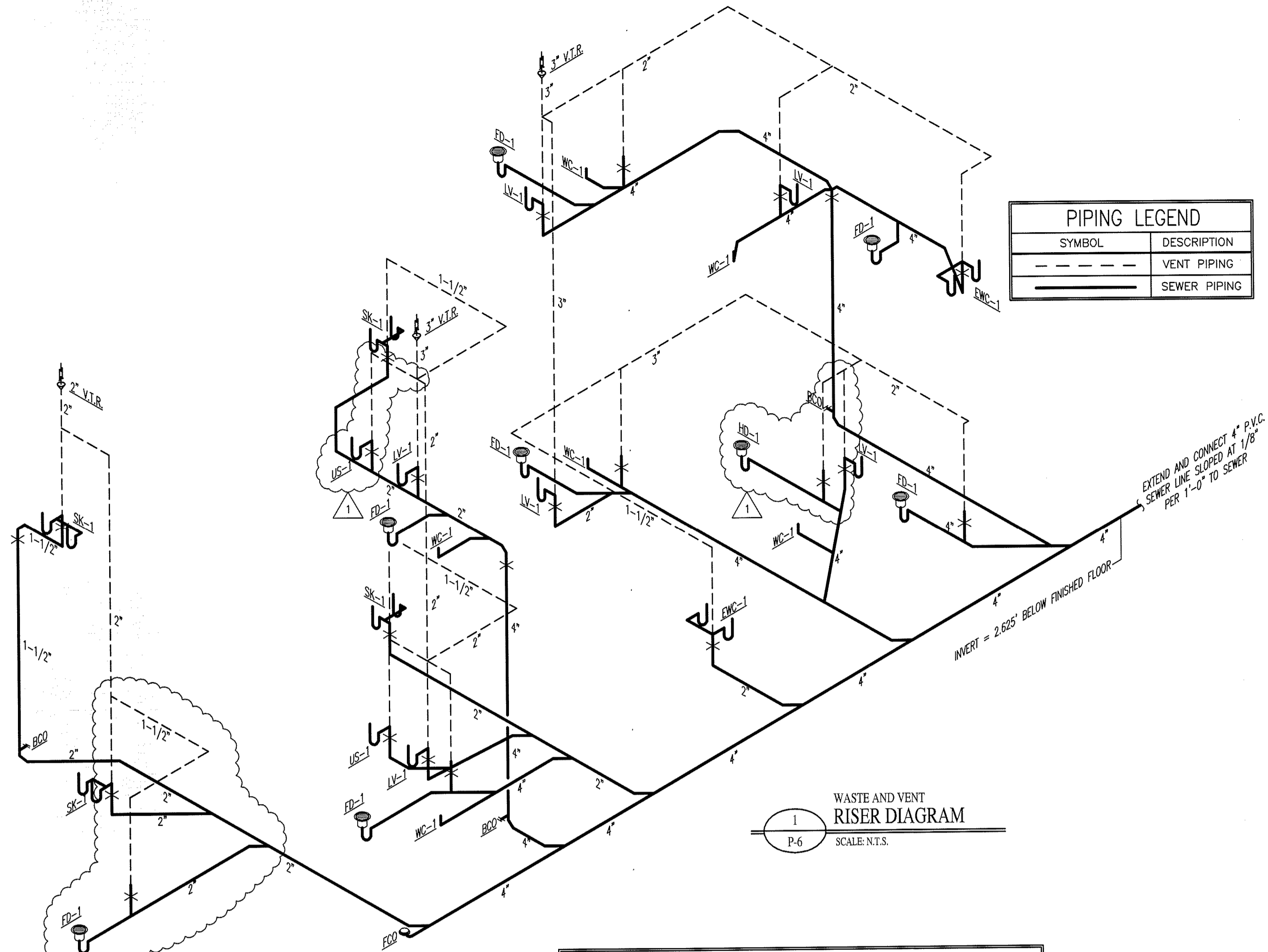
PIPING LEGEND

SYMBOL	DESCRIPTION
H	HOT WATER
C	COLD WATER

MINIMUM FACILITIES CALCULATIONS

OCCUPANCY CLASSIFICATION (PER TABLE 403.1)	SQUARE FOOTAGE	SQ. FT. PER OCCUPANT (PER TABLE 1004.1.2)	CALCULATED # OF PEOPLE	DIVISION OF FACILITIES (PER 403.3)		FIXTURES REQUIRED PER TABLE 403.1															
				MEN	WOMEN	WATER CLOSETS		LAVATORIES		URINALS	SHOWERS/TUBS	DRINKING FOUNTAINS		WATER CLOSETS		LAVATORIES		URINALS	SHOWERS/TUBS	DRINKING FOUNTAINS	
						REGULAR	ACCESSIBLE	REGULAR	ACCESSIBLE			REGULAR	ACCESSIBLE	REGULAR	ACCESSIBLE	REGULAR	ACCESSIBLE			REGULAR	ACCESSIBLE
BUSINESS (1st FLOOR)	5,660 (GROSS)	100 GROSS	58	29 (50%)	29 (50%)	2	2	2	2	-	-	1	1	3	3	3	3	-	-	1	1
BUSINESS (2nd FLOOR)	5,660 (GROSS)	100 GROSS	58	29 (50%)	29 (50%)	2	2	2	2	-	-	1	1	3	3	3	3	-	-	1	1

REV #	DATE	BY	CHECKED	DESCRIPTION
1	3/3/09	TGW	JNK	REVISED TO SUIT PLAN VIEW CHANGES, RELOCATED WATER ENTRY LOCATION, AND ADDED UTILITY SINK AT THE REQUEST OF THE GENERAL CONTRACTOR (A. KNIGHT). REFER TO EMAIL FROM ARCHITECT (D. RIPPERTON) DATED 2-20-09.



PIPING LEGEND	
SYMBOL	DESCRIPTION
(Symbol: Dashed line)	VENT PIPING
(Symbol: Solid line)	SEWER PIPING

1 WASTE AND VENT RISER DIAGRAM
SCALE: N.T.S.

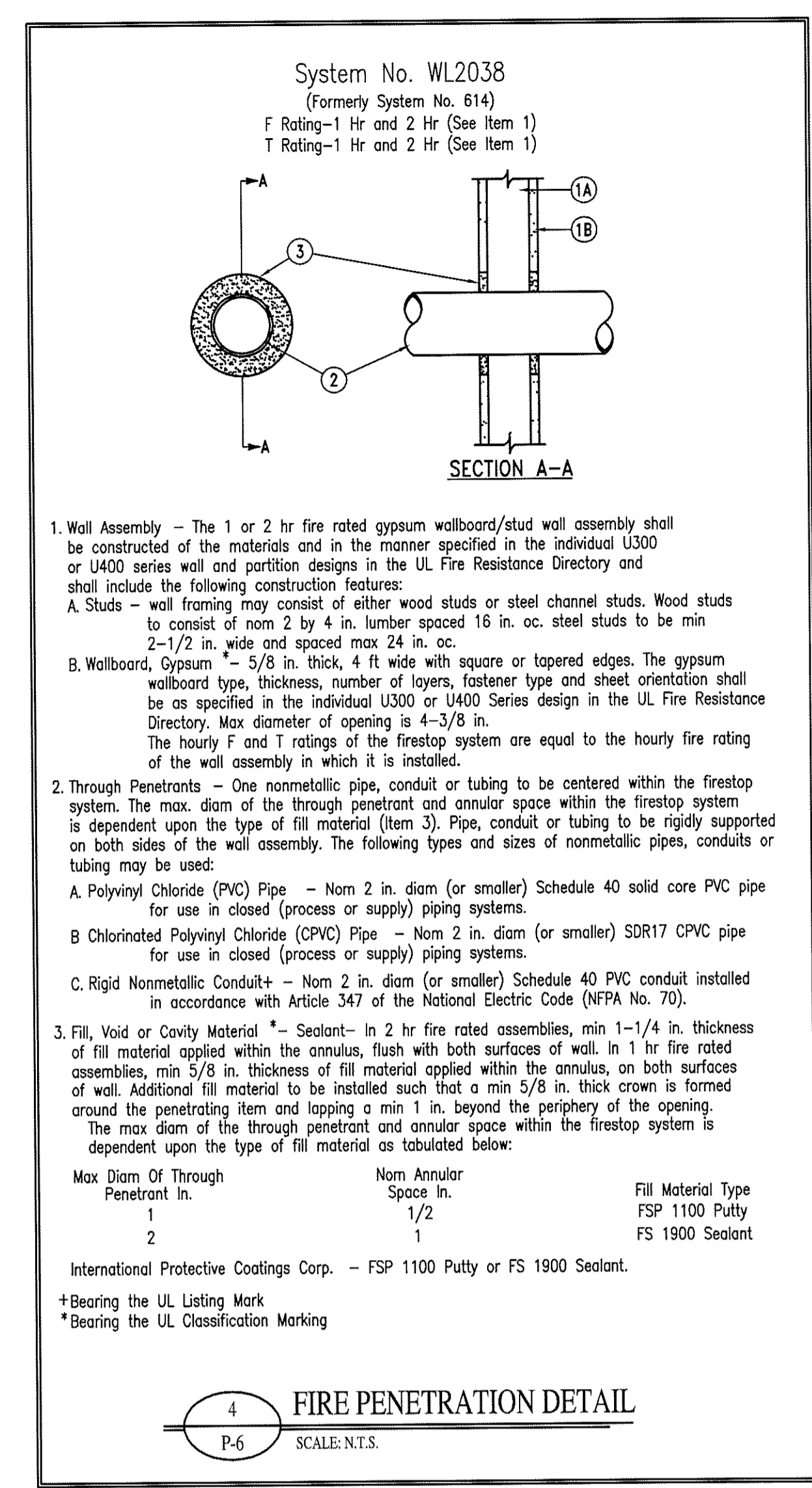
WATER HEATER SCHEDULE							
MARK	TANK VOLUME	RECOVERY	TEMPERATURE RISE	ELEMENT SIZE	POWER	MANUFACTURER	MODEL
EW-1	40 GAL.	21 GPH	90°	4.5 KW	208/1Ø	RHEEM	82V40-2

WASTE AND WATER CALCULATIONS									
FIXTURE TYPE	QUANTITY	WASTE FIXTURE UNITS		HOT WATER FIXTURE UNITS		COLD WATER FIXTURE UNITS		TOTAL WATER FIXTURE UNITS	
		PER UNIT	TOTAL	PER UNIT	TOTAL	PER UNIT	TOTAL	PER UNIT	TOTAL
WATER CLOSET	6	4	24	0	0	5	30	5	30
LAVATORY	6	1	6	1.5	9	1.5	9	2	12
DRINKING FOUNTAIN	2	0.5	1	0	0	0.25	0.5	0.25	0.5
DISHWASHER	2	2	4	1.4	2.8	0	0	1.4	2.8
KITCHEN SINK	4	2	8	1	4	1	4	1.4	5.6
ICE MAKER BOX	2	0	0	0	0	0.25	0.5	0.25	0.5
HOSE BIBB	3	0	0	0	0	0.5	1.5	0.5	1.5
FLOOR/HUB DRAIN	8	2	16	0	0	0	0	0	0
UTILITY SINK	2	2	4	1	2	2	1.4	1.4	2.8
TOTAL			63		17.8		47.5		50.1

1. 4" WASTE LINE SLOPED AT 1/8" PER 1'-0" IS ADEQUATE FOR 180 FIXTURE UNITS
 2. 2" WATER LINE IS ADEQUATE FOR 80 GPM.
 GPM = 29.1

PLUMBING FIXTURE SCHEDULE								
ITEM NO.	FIXTURE DESCRIPTION	MANUFACTURER	* MODEL NO.	CONNECTION SIZES				REMARKS
				C.W.	H.W.	WASTE	VENT	
EW-1	ELECTRIC WATER COOLER - BI-LEVEL	SUNROC	ADADB8L	1/2"	--	1-1/2"	1-1/2"	BI-LEVEL WATER COOLER
WC-1	WATER CLOSET - TANK TYPE	AMER. STD.	2998.012	1/2"	--	4"	2"	FLOOR MTD. 1.6 GAL/FLUSH, H.C. HEIGHT
LV-1	WALL HUNG LAVATORY	AMER. STD.	0355.012	1/2"	1/2"	1-1/2"	1-1/2"	SINGLE LEVER FAUCET, TRUEBRO PIPING COVERS
SK-1	DOUBLE COMPARTMENT SINK	STERLING	PRO33226	1/2"	1/2"	1-1/2"	1-1/2"	SINGLE LEVER FAUCET, TRUEBRO PIPING COVERS (WHERE PIPING IS EXPOSED)
US-1	UTILITY SINK	FIAT	FL-1	1/2"	1/2"	2"	1-1/2"	MTD. ON LEGS
IB-1	ICE MAKER BOX	PPP	MM-500-MMB	1/2"	--	--	--	MIP VALVE WITH SHOCK ARRESTOR
FPWH-1	FROST PROOF WALL HYDRANT	WOODFORD	65	1/2"	--	--	--	MOUNT 24" ABOVE GRADE LEVEL
FD-1	FLOOR DRAIN	ZURN	Z-415-B	--	--	2"	1-1/2"	BODY ASSEMBLY WITH "TYPE B" STRAINER AND TRAP PRIMER
BCO	BASE CLEAN OUT	ZURN	Z-1441	--	--	--	--	SIZE DETERMINED UPON WASTE PIPE
FCO	FLOOR CLEAN OUT	ZURN	Z-1400	--	--	--	--	SIZE DETERMINED UPON WASTE PIPE
HD-1	HUB DRAIN	CHARLOTTE PLASTICS	4" x 2"	--	--	3"	--	BODY ASSEMBLY WITH "TYPE B" STRAINER AND TRAP PRIMER

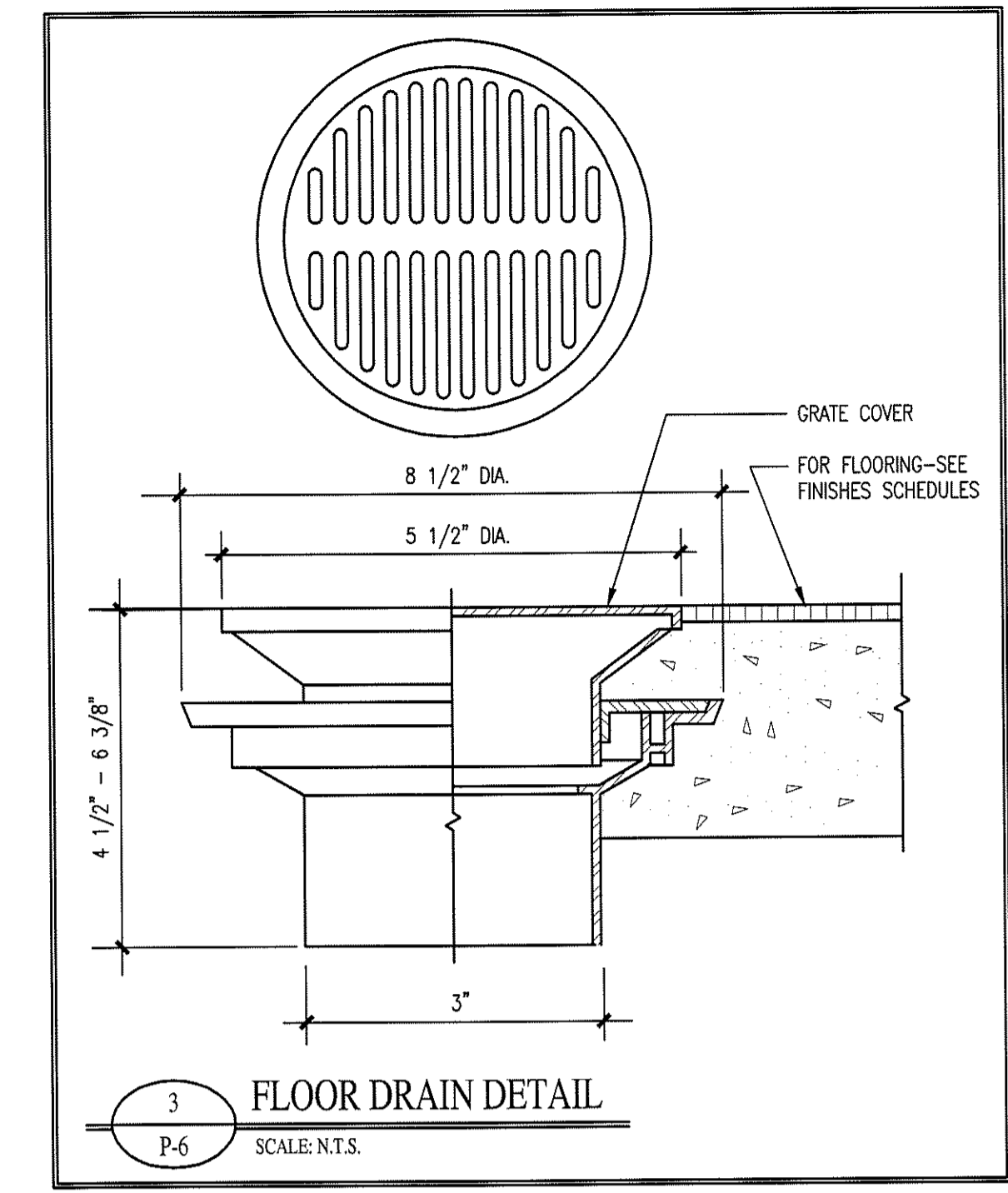
* FIXTURE MODEL NUMBERS LISTED ARE FOR DESCRIPTION ONLY.



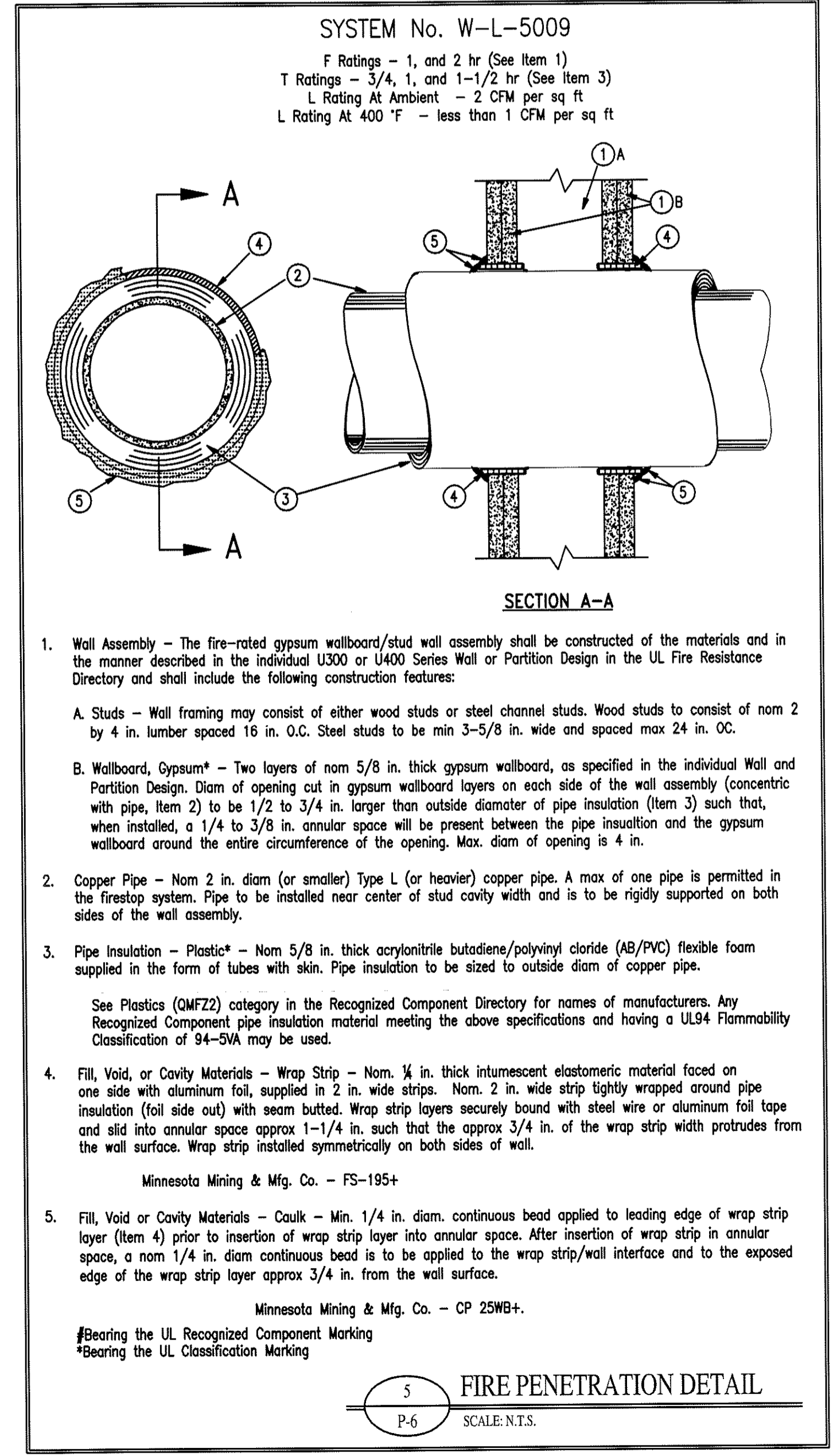
- System No. WL2038
 (Formerly System No. 614)
 F Rating - 1 Hr and 2 Hr (See Item 1)
 T Rating - 1 Hr and 2 Hr (See Item 1)
- Wall Assembly - The 1 or 2 hr fire rated gypsum wallboard/stud wall assembly shall be constructed of the materials and in the manner specified in the individual U300 or U400 series wall and partition designs in the UL Fire Resistance Directory and shall include the following construction features:
 - Studs - wall framing may consist of either wood studs or steel channel studs. Wood studs to consist of nom 2 by 4 in. lumber spaced 16 in. oc. steel studs to be min 2-1/2 in. wide and spaced max 24 in. oc.
 - Wallboard, Gypsum* - 5/8 in. thick, 4 ft wide with square or tapered edges. The gypsum wallboard type, thickness, number of layers, fastener type and sheet orientation shall be as specified in the individual U300 or U400 Series design in the UL Fire Resistance Directory. Max diameter of opening is 4-3/8 in. The hourly F and T ratings of the firestop system are equal to the hourly fire rating of the wall assembly in which it is installed.
 - Through Penetrants - One nonmetallic pipe, conduit or tubing to be centered within the firestop system. The max. diam of the through penetrant and annular space within the firestop system is dependent upon the type of fill material (Item 3). Pipe, conduit or tubing to be rigidly supported on both sides of the wall assembly. The following types and sizes of nonmetallic pipes, conduits or tubing may be used:
 - Polyvinyl Chloride (PVC) Pipe - Nom 2 in. diam (or smaller) Schedule 40 solid core PVC pipe for use in closed (process or supply) piping systems.
 - Chlorinated Polyvinyl Chloride (CPVC) Pipe - Nom 2 in. diam (or smaller) SDR17 CPVC pipe for use in closed (process or supply) piping systems.
 - Rigid Nonmetallic Conduit+ - Nom 2 in. diam (or smaller) Schedule 40 PVC conduit installed in accordance with Article 347 of the National Electric Code (NFPA No. 70).
 - Fill, Void or Cavity Material* - Sealant - In 2 hr fire rated assemblies, min 1-1/4 in. thickness of fill material applied within the annulus, flush with both surfaces of wall. In 1 hr fire rated assemblies, min 5/8 in. thickness of fill material applied within the annulus, on both surfaces of wall. Additional fill material to be installed such that a min 5/8 in. thick crown is formed around the penetrating item and lapping a min 1 in. beyond the periphery of the opening. The max diam of the through penetrant and annular space within the firestop system is dependent upon the type of fill material as tabulated below:

Max Diam Of Through Penetrant In.	Nom Annular Space In.	Fill Material Type
1	1/2	FSP 1100 Putty
2	1	FS 1900 Sealant
- International Protective Coatings Corp. - FSP 1100 Putty or FS 1900 Sealant.
 +Bearing the UL Listing Mark
 *Bearing the UL Classification Marking

4 FIRE PENETRATION DETAIL
SCALE: N.T.S.

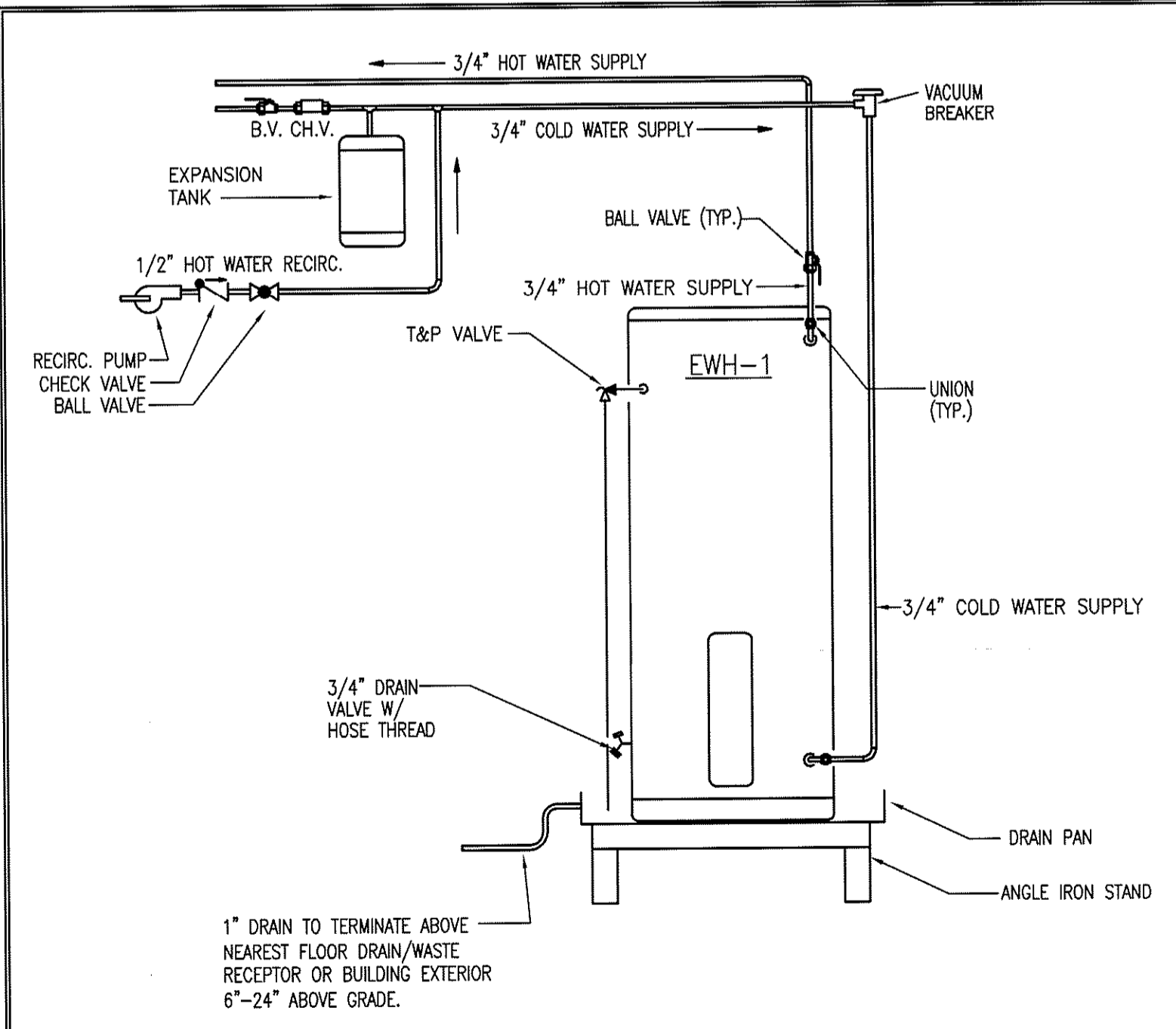


3 FLOOR DRAIN DETAIL
SCALE: N.T.S.



- System No. W-L-5009
 F Ratings - 1, and 2 hr (See Item 1)
 T Ratings - 3/4, 1, and 1-1/2 hr (See Item 3)
 L Rating At Ambient - 2 CFM per sq ft
 L Rating At 400 °F - less than 1 CFM per sq ft
- Wall Assembly - The fire-rated gypsum wallboard/stud wall assembly shall be constructed of the materials and in the manner described in the individual U300 or U400 Series Wall or Partition Design in the UL Fire Resistance Directory and shall include the following construction features:
 - Studs - Wall framing may consist of either wood studs or steel channel studs. Wood studs to consist of nom 2 by 4 in. lumber spaced 16 in. O.C. Steel studs to be min 3-5/8 in. wide and spaced max 24 in. OC.
 - Wallboard, Gypsum* - Two layers of nom 5/8 in. thick gypsum wallboard, as specified in the individual Wall and Partition Design. Diam of opening cut in gypsum wallboard layers on each side of the wall assembly (concentric with pipe, Item 2) to be 1/2 to 3/4 in. larger than outside diameter of pipe insulation (Item 3) such that, when installed, a 1/4 to 3/8 in. annular space will be present between the pipe insulation and the gypsum wallboard around the entire circumference of the opening. Max. diam of opening is 4 in.
 - Copper Pipe - Nom 2 in. diam (or smaller) Type L (or heavier) copper pipe. A max of one pipe is permitted in the firestop system. Pipe to be installed near center of stud cavity width and is to be rigidly supported on both sides of the wall assembly.
 - Pipe Insulation - Plastic* - Nom 5/8 in. thick acrylonitrile butadiene/polyvinyl chloride (AB/PVC) flexible foam supplied in the form of tubes with skin. Pipe insulation to be sized to outside diam of copper pipe. See Plastics (QMFZ2) category in the Recognized Component Directory for names of manufacturers. Any Recognized Component pipe insulation material meeting the above specifications and having a UL94 Flammability Classification of 94-SVA may be used.
 - Fill, Void, or Cavity Materials - Wrap Strip - Nom 1/4 in. thick intumescent elastomeric material faced on one side with aluminum foil, supplied in 2 in. wide strips. Nom. 2 in. wide strip tightly wrapped around pipe insulation (foil side out) with seam butted. Wrap strip layers securely bound with steel wire or aluminum foil tape and slid into annular space approx 1-1/4 in. such that the approx 3/4 in. of the wrap strip width protrudes from the wall surface. Wrap strip installed symmetrically on both sides of wall. Minnesota Mining & Mfg. Co. - FS-195+.
 - Fill, Void or Cavity Materials - Caulk - Min. 1/4 in. diam. continuous bead applied to leading edge of wrap strip layer (Item 4) prior to insertion of wrap strip layer into annular space. After insertion of wrap strip in annular space, a nom 1/4 in. diam continuous bead is to be applied to the wrap strip/wall interface and to the exposed edge of the wrap strip layer approx 3/4 in. from the wall surface. Minnesota Mining & Mfg. Co. - CP 25WB+.
- #Bearing the UL Recognized Component Marking
 *Bearing the UL Classification Marking

5 FIRE PENETRATION DETAIL
SCALE: N.T.S.



1" DRAIN TO TERMINATE ABOVE NEAREST FLOOR DRAIN/WASTE RECEPTOR OR BUILDING EXTERIOR 6"-24" ABOVE GRADE.

PUMP SCHEDULE						
MARK	MANUFACTURER	MODEL NO.	GPM	HEAD (FT.)	HP	VOLTAGE
RCP-1	B & G	PL-30	4	17	1/12	115V/1Ø

2 ELECTRIC WATER HEATER DETAIL
SCALE: N.T.S.

REV #	DATE	BY	CHECKED	DESCRIPTION
1	3/3/09	TGW	[Signature]	REVISED TO SUIT PLAN VIEW CHANGES AT THE REQUEST OF THE GENERAL CONTRACTOR (A. KNIGHT). REFER TO EMAIL FROM ARCHITECT (D. RIPPERTON) DATED 2-20-09.

Copyright © 2008 Alamance Consulting Engineers, P.A. All Rights Reserved. No part of these plans may be copied, reproduced or used in any way without the express written permission of Alamance Consulting Engineers, P.A.

Alamance Consulting Engineers
 961-F Burlington Ave.
 Gibsonville, N.C. 27249
 Phone: (336) 449-4558
 Fax: (336) 449-5732

HOUSEWRIGHT BUILDING CO.
 P.O. BOX 786
 CARBORO, NC 27510
 919-524-2074

NEW BUILDING FACILITY: CBC OFFICE BUILDING
 Hillsborough, North Carolina

DRAWING NAME
PLUMBING DETAILS

DRAWN
 TGW
 CHECKED
 JNK
 DATE
 1/8/09
 SCALE
 AS NOTED
 JOB NO.
 8123
 SHEET

P-6